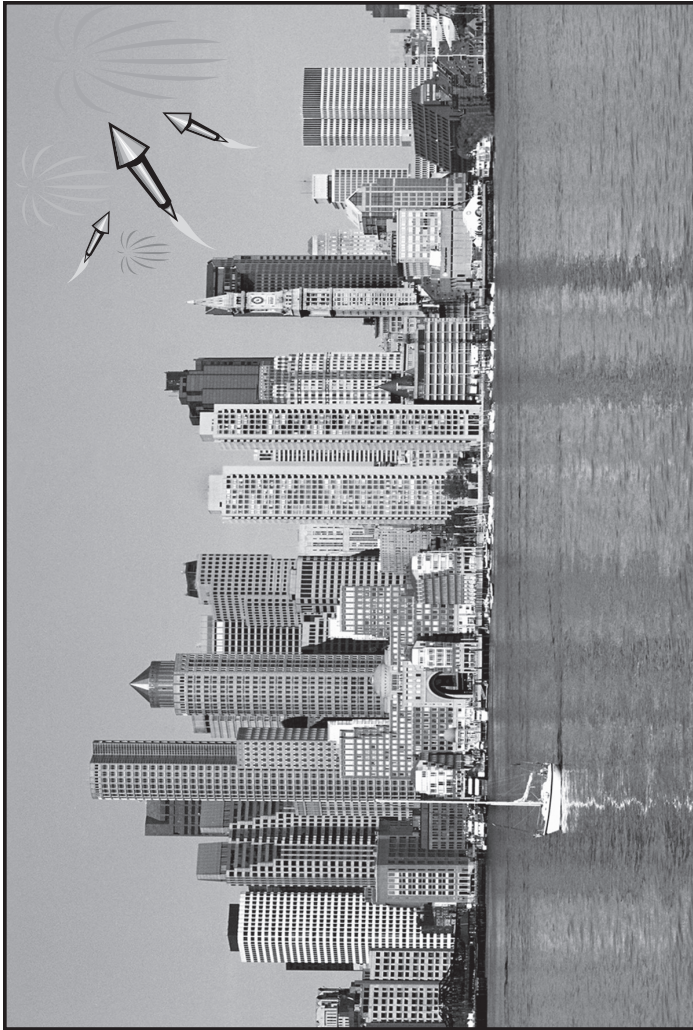




ASPENEWS

1973 - THE BOSTON CHAPTER - 2011

A.S.P.E. - P.O. Box 111, East Walpole, MA 02032 - Vol. 38, Issue 5



WHAT'S IN THIS ISSUE

President's Report	2
Membership Report	2
NE Fire Protection Product Show Information	3
Technical Report	3
Robert J. Pink	4
Legislative Report	Insert
Calendar	Insert

Society email aspehq@aol.com

Society Website www.aspe.com

Boston Chapter Website www.aspebostonchapter.org

Next Meeting

Tuesday, January 11, 2011

The Lantana, Randolph, MA

MAIN PROGRAM

Design & Sizing of Vacuum Systems

*Presented By:
Bob Littman*

PROGRAM SCHEDULE

Social Hour	5:00 – 6:00
Dinner	6:00 – 7:00
Chapter Business	6:45 – 7:00
Speaker / Technical Session	7:00 – 8:30

MENU

Minestrone Soup, Pollo Napolitano
Apple Cobbler

MEETING RESERVATIONS

\$30.00 Reservation

\$40.00 W/O Reservation

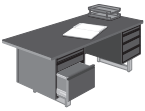
Retired & Currently Unemployed Members are Free

Please reserve by **Friday, January 7, 2011**

Contact Cathy @ W.P. Haney,
(508) 238 – 2030

**Where Quality and Professionalism
are an every day standard!**

Chapters are not authorized to speak for the Society



President's Report

Ladies and Gentlemen,

First would like to wish everyone a happy new year. I hope everyone has had a great holiday season and that all our chapter members have a prosperous new year. As we all know it has been a tough couple of years for all our members and I hope that the economy turns around in the new year and that we will all be busy again by this time next year.

I was sitting and thinking the other day about a few items which I have not been able to address during my presidency. With only five months left, I would like to take some time and touch on one of these issues. When I first started office I had grand plans of attempting to start a student Chapter at Wentworth Institute of Technology. Due to the need to address other issues during my time I was never able to actually make this a reality. My plan now is to try and accomplish this after I have left office. At last month's convention Bill Hughes, our new National president, and I discussed this. We both believe this method of attracting younger members is a terrific way to grow the society. To do this I will be asking Boston chapter members for their support and to donate some time to the effort. My vision is to create a pool of young engineers and manufacturing engineers from which our firms, including the affiliates, can draw on to supplement our personnel. With the idea that these young CO-OP students would have some familiarity with our business. Wentworth has set aside time during the weeks for the student chapters to have meetings and we can have engineers, manufacturers, and Reps come in during these times to talk to the kids and generate interest in our business.

Also we are in talks to have the next CPD exam prep class and I hope to have everything in place by mid January to hold the class in the March time frame. I hope the younger members take advantage of these educational opportunities the board has been trying to create for them.

By Frederick Neth, CPD, President, Boston Chapter ASPE



Membership News

New Members

The Boston Chapter would like to welcome its three newest members;

Leland Bramer	Associate Member Einhorn Yaffee Prescott	Boston, MA
David Auerbach	Student Member M.I.T.	Cambridge, MA
Robert Lyman	Associate Member Etter Engineering Co.	Bristol, CT

As of this month, the Boston Chapter now has 297 members. The following is a breakdown of the different membership classifications of our members:

Full Members – 165
 Affiliate Members – 67
 Associate Members – 27
 Special Members – 22
 Retired Members – 8
 Government Members – 4
 Student Members – 2
 Life Members – 2

What concerns me is that our membership numbers continue to dwindle every month. While it is not a surprise to see a membership decline in this economy, I know for a fact it's frequently just a matter of members not being diligent about sending in their membership renewal in a timely fashion. That being the case, Joan Panora has been doing a great job contacting our members to remind them that their membership is about to expire. If you get a call or email from Joan, please let her know if you will be rejoining or not. We won't keep hounding you, I promise, we just need to know one way or another so I can send a report back to Society. There are over two dozen members this month alone that haven't sent in their renewal yet. That's a lot. If you are one of them, please take care of it as soon as you can. We'd appreciate it. Thanks for your attention to this issue.

(Continued on page 6)

President

Fredrick S. Neth, EIT
Parsons Brinckerhoff
Tel: (617) - 960 - 4809
e-mail: nethf@pbworld.com

V. P. Technical

Rich Dean, CPD
R. G. Vanderweil
Tel: (617) - 956 - 4743
Fax: (617) - 423 - 7401
e-mail: RDean@Vanderweil.com

V. P. Legislative

Manuel B. Garcia, PE, CPD
Tel: (508) - 728 - 5652
Fax: (774) - 202 - 7677
e-mail: mgarcia43@comcast.net

Deputy V.P Legislative

Laurence D. Johnston, CPD
Syska Hennessy Group, Inc
Tel: (617) - 682 - 4758
Fax: (617) - 577 - 9191
e-mail: ljohnston@syska.com

V. P. Membership

John Callahan
J. H. Pokorny Associates
Tel: (781) - 762 - 2661
Fax: (781) - 762 - 5949
e-mail: johnc@jhpokorny.net

Treasurer

Richard Pokorny
J. H. Pokorny Associates
Tel: (781) - 762 - 2661
Fax: (781) - 762 - 5949
e-mail: richp@jhpokorny.net

Administrative Secretary

Paul Galvin
GF Piping Systems
Tel: (741) - 788 - 7042
Fax: (508) - 362 - 3544
e-mail: paul.galvin@georgfischer.com

Corresponding Secretary

Patrick J. Haney
W. P. Haney Company
Tel: (508) - 238 - 2030
Fax: (508) - 238 - 8353
e-mail: phaney656@aol.com

ASPENEWS Editor

Dawn Pokorny
Tel: (508) - 520 - 0133
Fax: (781) - 762 - 5949
e-mail: dawnp@jhpokorny.net

Education Chairman

Blair Chamberlain, PE, CPD
WSP Flack + Kurtz
Tel: (617) - 210 - 1631
Fax: (617) - 210 - 1800
e-mail: Blair.Chamberlain@wspfk.com

Affiliate Liaison

Jeff Gooding
Tel: (401) - 639 - 4429
Fax: (508) - 894 - 2001
email: jgooding@goodingd.com

Board of Governors

Chairman - Al Marzullo PE, CPD

Members

Joseph A. Vela, Sr., CPD
William F. Hughes, CPD



Technical Report

Wow the end of another year and what a year it has been. The more people I talk to the more it is said that this is one of the most challenge and difficult of economic times that they have ever experienced. I try to be as optimistic as possible despite knowing that many in our industry have been laid-off or have their salaries and hours reduced (really salary reduced as they are still putting 40 plus hours). I had written back in September how work has been more challenging than ever. Project budgets are lower, project schedules are shorter, and the expectation for high quality has not diminished. The question still remains how can we do our jobs effectively in less time and without errors?

Arguably the answer is practice! Think of a how the Patriots, Celtics or Bruins approach their objectives. They practice. This is a bit of a stretch but think about how little time we devote to developing an edge in achieving our personal and professional goals. Yes we are professionals and we need to practice. Professional athletes view opponent's game films. They work on their physical skills through repetitive exercise. All this is done to achieve the high level of execution. What do we do to practice? Sometimes our practice is repetitive execution of issuing projects. This works to a point but what do we do to get to the next level? A few suggestions; attending seminars, classes, and researching different topics.

We at ASPE do strive to help out our colleagues by offering various technical topics. Some of the topics may not be very appealing initially, but remember that you cannot judge a book by its cover. Attend the monthly meetings and keep an open mind. You may find that you gleaned a bit of information that could give you that edge.

The December meeting was about Building information Modeling (BIM) software. Mr. Will Mainor of Microdesk presented an outline of Revit MEP 2011. He started the discussion about how Revit has evolved since Autodesk purchased the company in 2005. He showed an extensive list of architects and local institutions that use Revit to design and model many projects. The role a BIM project has in the life of a facility; using it as an inventory tracking system after the design and construction phases are completed. In fact Will pointed

(Continued on page 6)

New England Fire Protection Systems Designers Product Show

The New England Association of Fire Protection Systems Designers announces their 10th New England Fire Systems Product Show. The show will feature over fifty spectacular product booths exhibiting the latest in cutting edge technology and providing information to over 2,000 invited guests!! The show will be held on **Thursday, March 17, 2011 at Lantana's in Randolph, Massachusetts**. In addition, the show will feature concurrent fire protection seminars free of charge. For information on booth space or guest list contact:

New England Association of Fire Protection Systems Designers (NEAFPSD),
P.O. 149, Wrentham, MA 02093-0149
or visit our web site at www.neafpsd.com


GOURLEYCO



HOT WATER BY DESIGN

80 FELTON STREET, WALTHAM, MA 02453

Phone: 781-894-9500 Fax: 781-894-2301

Website: www.gourleyco.com

 Gas Water Heating Boilers
Hydronic Heating Boilers
Gas Fired Booster Heaters
Commercial Pool and Spa Heaters

 Tank-type Water Heaters
Gas and Electric
Residential and Commercial 

 Semi-Instantaneous &
Factory Packaged
Water Heaters

 Ultra High Efficiency
Stainless Steel Boilers

603-644-5554

Fax: 644-3338

800-542-5554

sales@towerhillsales.com

www.towerhillsales.com

P.O. Box 457
320 Rockingham Road, Unit 4
Auburn, New Hampshire 03032


Tower Hill
Sales Associates, Inc.

SLOAN VALVE CO. • HALSEY W. TAYLOR CO. • LEONARD VALVE CO.
WATER SAVER • GUARDIAN • GEORGE FISCHER
JUST • ACORN • CHRONOMITE

J.H. POKORNY ASSOCIATES

1502 PROVIDENCE HIGHWAY
NORWOOD, MA 02062
www.jhpokorny.net

TEL (781) 762-2661
FAX (781) 762-5949
info@jhpokorny.net


PRACTICAL APPLICATIONS
pH Neutralization
Greywater • Bio Decontamination
Amalgam / Mercury Treatment
www.paiH2O.com 617-423-5639

**Robert J. Pink
1928—2010**

At some point in our lives we have all had to deal with a loss, it may be in some cases material such as a sporting event or an automobile, most of the time material losses can be replaced. In some cases a loss can be personal and leave a deep feeling of sorrow, this type of loss can never be replaced.




So it is with perhaps the closest friend that I have ever had. For more than 50 years I was honored to have Bob as a friend.

There was never a time that Bob did not find the time to discuss a situation with you, be it personal or business related. Even in his last months before his passing he would call to see how things are progressing with my problems.

He would always say to me "you are in my prayer list and keep the faith".

To the family that Bob has left behind I extend my deepest sympathy and hope that you will continue with the good that Bob showed to so many people during his life time.

God Bless, Joe B



Patrick J. Haney

Represented by:
WP Haney Co.
51 Norfolk Ave.
South Easton, MA 02375
Phone (508) 238-2030
Fax (508) 238-8353
Cell (508) 326-7056

Technical assistance | training | promotional materials

Working with copper? Have a question?

Dale L. Powell

Project Manager & Piping Applications Specialist

Tel: 717.533.0353 / 212.251.7202

Fax: 866.462.1751

E-mail: dpowell@cda.copper.org

Do it Proper. Do it Copper.®



www.copper.org

SLOAN
SLOAN VALVE COMPANY

Represented to ASPE by:

J.H. Pokorny Associates

phone: 781-762-2661

web: www.jhpokorny.net • e-mail: info@jhpokorny.net

Newsletter Advertising

We will soon be accepting advertisements for the 2010-2011 advertising year.

**WE OFFER BUSINESS CARD
SIZE ADVERTISEMENT**

**The exact size is 3½" Wide X 2" High.
The cost for the advertisement is \$650/yr.
Ads will not be pro-rated.**

We only need new electronic files on new or changing ads. If this is an exact repeat of last years ad do not send a new file.

Acceptable file extensions formats are:

"doc" or "pub" or "jpg".

Please do not have artwork scanned, as it compromises the quality of your ad.

There will be an additional \$75.00 set up fee each time there is an ad change during the year.

ADS are to be the size of a business card – but do not need to be just a business card they may or may not include a persons name and can include line information, as long as the size and orientation is, as stated, 3 ½" wide X 2" high.

For an Ad Request Form & Payment information contact Dawn Pokorny at 508-520-0133 or dawnp@jhpokorny.net

The Walter F.



77 Green St. Foxboro, MA
Ph: 1-800-888-1922
Fax: 1-800-888-1942
www.walterfmorris.com

BOCK WATER HEATERS • BOSCHPRO TANKLESS

COMFORTPRO • FLOODMASTER

3M / AQUA-PURE • IPEX • LUXPRO

N Y THERMAL • WOODFORD/ WATCO



Spencer The Spencer Turbine Company

Manufacturer's of:

- UL-Listed Hermetic Natural Gas Boosters
- Central Vacuum Systems for Housekeeping, Oral, and Surgical Laser Smoke Evacuation

Represented by: **Environmental Air Specialties**
 P.O. Box 541 – Grafton, MA 01519
 p: 508-839-6157 – f: 508-839-4431
www.easne.com

Maurice Brodeur – Sales/Engineering
 Cell: 508-958-6346 – mbrodeur@easne.com



Guardian

EMERGENCY EYEWASH & SHOWER TECHNOLOGY

J.H. Pokorny Associates
 1502 Providence Highway
 Norwood, MA 02062
 781 762 2661 TELEPHONE
 781 762 5949 FACSIMILE

Guardian Equipment
 1140 N North Branch St
 Chicago, IL 60642
 312 447 8100 TELEPHONE
 312 447 8101 FACSIMILE



**WE KNOW BIM.
DO YOU?**

WSP FLACK + KURTZ HOLDS REGISTERED DEVELOPER STATUS WITH AUTODESK, AN INDUSTRY LEADER IN BIM TECHNOLOGY. WE COLLABORATED WITH AUTODESK IN THE PRODUCT DEVELOPMENT OF REVIT MEP, AN MEP BUILDING MODELING SOFTWARE SOLUTION.

We're always looking to connect with talented individuals that have BIM experience. Are you:

- Familiar with Revit 2010
- Experienced creating REVIT families
- Comfortable working in 2-D and 3-D as well as coordinating with other trades including architects and structural engineers
- Experienced with Bentley Building & AutoCAD 3-D platforms

FOR MORE INFORMATION,
 CONTACT BLAIR CHAMBERLAIN:
BLAIR.CHAMBERLAIN@WSPFK.COM
WWW.WSPFK.COM



Getting Plumbing Engineers To Hold Their Specs.....

According to ASPE's recent poll, the majority of respondents think that working with PCA and other contractor groups to educate them on the importance of holding spec as well as holding webinars and discussion groups on the importance of holding the spec are the best ways ASPE can help plumbing engineers hold their specs. Surprisingly, 24% think plumbing engineers don't hold their specs due to pressures from contractors and manufacturers.

ELKAY EZH₂O™
 Quick, Clean & Green

For more than 90 years Elkay has been an innovator in manufacturing stainless steel sinks and coolers. Now we are excited to introduce the new EZH2O™ bottle filling station.

Ideal for education, healthcare facilities, fitness clubs, and hospitality

Emerson Swan
 (800) 346-9215

Retro Fit To Any "EZ" Cooler



**Piping.
Systems.
Solutions.**

victaulic

Northeast Engineering Specialist
 David Dears • 617-824-0601

www.victaulic.com
 1-800-PICK-VIC



(Continued from "Membership Report" page 2)

New Membership Drive Prize Drawing

Want to win a great prize? All you have to do is help with our upcoming membership drive. The Boston Chapter is having a Membership Drive from January 1st, 2011 through May 1st, 2011. We will be holding a Membership Drive Prize drawing at the May meeting where the names of all new members and all sponsors will be entered into the drawing and one name will be selected at random. The winner will receive a \$250 gift card to Best Buy.

Here's how it works:

If you **JOIN** the Boston Chapter between 1/1/11 and 5/1/11 you get one entry into the drawing.

If you **SPONSOR** someone that joins the Boston chapter during those dates you get one entry into the drawing.

If you **SPONSOR MULTIPLE MEMBERS**, you get multiple entries. For instance, you get two entries for the second member, three entries for the third member, and so on. The more members you sponsor, the more entries you receive.

Membership applications can be downloaded off the www.aspe.org website. Completed membership applications should include the sponsor's name on the applicable line at the bottom of the application. The application and membership dues payment should then be mailed to me, John Callahan, c/o J. H. Pokorny Associates, 1502 Providence Highway, Norwood, MA 02062. This will allow me to accurately track all new members and their sponsors. I will forward your application and membership dues payment on to Society. Then all you have to do is sit back and wait for the May Chapter meeting. All new members and their respective sponsors will drop their entries into the drawing bowl and our very own ASPE Society President William Hughes will select the winning entry. Please note that you must be present to win, so mark down May 10th, 2011 in your calendar now.

Lost & Found

Now this is something new for my membership report; a Lost & Found section. Maybe you can help...we seem to have lost a member. This month we had a newsletter come back undelivered. No reason why, other than what was stamped on the yellow USPS return sticker which read: "Return to Sender - Attempted - Not known, Unable to Forward". The newsletter was addressed to Clarence C. Twohig, P.E., 29 Travis Street, Worcester, MA. If you happen to know Clarence or his current address, please email me at johnc@ihpokorny.net. I'd like to make sure Clarence continues to receive his monthly newsletter.

By John Callahan, CPD, V.P. Membership, Boston Chapter ASPE

(Continued from "Technical Report" page 3)

out how most of the clients on the list don't use traditional methods for project delivery. The discussion was also about high level considerations that need to be understood when using the software. The biggest issue is the time it takes compared to traditional computer aided drafting. There are very particular plumbing and mechanical systems that are not feasible to model and really do not offer any value other than exhausting your fees. It was suggested that in some cases a hybrid approach be considered by the MEP firm to achieve the project goals. Will did caution that if you are new to using a BIM package do small steps first and develop more comprehensive levels with each new project that you encounter. If you are interested in Revit MEP training Microdesk desk does offer fee based all day seminars. You can find out more information by visiting their website www.microdesk.com

January Technical Topic & Speaker

The January Technical topic is Design and Sizing of Vacuum Systems. This session is designed as a fundamental refresher session. The presentation will be by Bob Littman. I encourage all to make an effort to attend. If you are a department head or manager this is a great training opportunity. Encourage your employees to attend. If you are a contractor this is great course on the insight into the sizing and selection of vacuum equipment. If you are an affiliate invite a designer or an engineer. In closing I want to appeal to our membership for help:

1st. The chapter will hold its election of officers in May 2011. The elected positions make up the Board of Directors for the chapter. The Board always needs new blood. Consider a position or if you feel it will be too much but want to help out there is always committees and tasks to be performed. Please consider making a difference in the chapter by stepping up to the plate!

2nd. The chapter has started planning for the biannual product show. Paul Taylor and Nancy Bonnetti are the Product Show Committee Chairpersons and have plenty of tasks both large and small that need attention. This is a great way to get involved. It is also an opportunity to expand your networking contacts.

3rd. The monthly technical topics for the upcoming year of 2011 and 2012 need to be submitted. If you have any suggestions please send us your request.

I certainly hope that you have had nice Holiday season and hope to see you at the next chapter meeting.

By Rich Dean, CPD, V.P. Technical, Boston Chapter ASPE

**FREE DINNER
AT NEXT
ASPE MEETING**

Be one of the first two people
to email the
answers to the following questions to:
richp@jhpokorny.net

And get a FREE DINNER at the
January Meeting

1. What did Bob Pink always say to Joe?
2. What is the membership drive prize?



Leonard Valve Company
1360 Elmwood Avenue
Cranston, RI 02910
Ph (800) 222-1208
Fax (401) 941-5310
www.leonardvalve.com



J.H. Pokorny Associates

JH Pokorny Associates
1502 Providence Hwy
Norwood, MA 02062
Ph (781) 762-2661
Fax (781) 762-5949
www.jhpokorny.net



Leonard... "The Right Mix" for tempering
your domestic hot water system.



The Californians are coming!

California's low-lead legislation is spreading across the country, and T&S has already made all of our products low-lead across the line. And as always, T&S products are rugged, reliable, and available via 24-hour quick ship.



RELIABILITY BUILT IN™
www.tsbrass.com • 800.476.4103

Represented in Boston by Specification Sales - 781-396-0842



**Halsey Taylor HVR Series
Vandal-Resistant Water Coolers**

- Stainless steel construction
- U.L. listed for indoor **and outdoor** service
- Vandal-resistant features
- Can be installed to meet **adult or child ADA**
- Meets NSF/ANSI 61



 **Halsey Taylor**
Satisfying Thirsts Since 1912
630.574.3500

halseytaylor.com

Please Note

All Plumbing Board Meetings
Are Now Held at
1000 Washington Street, Boston

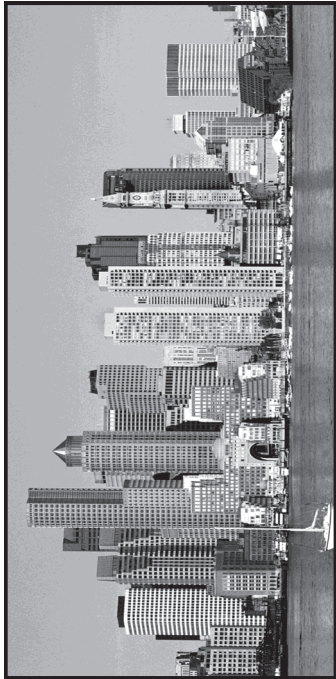
Index of Paid Advertisers

AO Smith	8	K Ross Co.	8	W.P. Haney / Watts	4
Copper Development Association	4	Kirschner Associates, Inc.	8		
Elkay	5	Leonard Valve	7		
Environmental Air Specialties	5	Practical Applications	3		
Fire Pump Testing Company	8	Sloan Valve Company	4		
Gourley	3	T & S Brass	7		
Guardian Equipment	5	Tower Hill Sales Associates, Inc.	3		
Halsey Taylor	7	Victautic	5		
J. H. Pokorny Associates	3	Walter F. Morris Company	4		



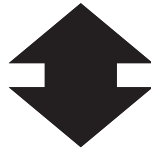
From:

**A.S.P.E.
P.O. Box 111
East Walpole, MA 02032**



Boston Chapter - AMERICAN SOCIETY OF PLUMBING ENGINEERS

**Next
Event**



**Tuesday
11th
January**

Send to:

FIRST CLASS MAIL

The Fire Pump Testing Company

Evaluation, Testing and Certification of Fire Suppression Systems
Fire Pump Testing, Standpipe Testing and Building Commissioning
Hydrant Flow Testing and Water Supply Analysis
Residential and Commercial System Installation and Service
Fire Protection Design and Engineering - System Hydraulic Analysis

Tel: (617) 971-0700
Fax: (617) 524-7171
Cell: (617) 592-4236

11 Varney Street <http://www.thefirepumptestingcompany.com>
Boston, MA 02130-4109 Email: tom@thefirepumptestingcompany.com
Thomas Duross CPD Member: ASPE, NFPA, AFSA, FCCCHR, BBB

*The High Efficiency Revolution is here
in Domestic Hot Water Production
from A. O. Smith*



ES Emerson Swan 800.346.9215

K Ross Co.
Manufacturers Agent

WWW.KROSSCO.COM
SALES@KROSSCO.COM
(781) 422.2273



KIRSCHNER ASSOCIATES, INC.

8 Abbey Lane, PO Box 312
Middleboro, MA 02346-0312
Tel: 800-752-1588 Fax: 508-947-0850
www.kirschnerassociates.com

**PATTERSON-KELLEY
AMERIDEX PHX • WENDLAND TANK
RITE BOILERS • NATCO HEATERS
SECURITY CHIMNEYS**