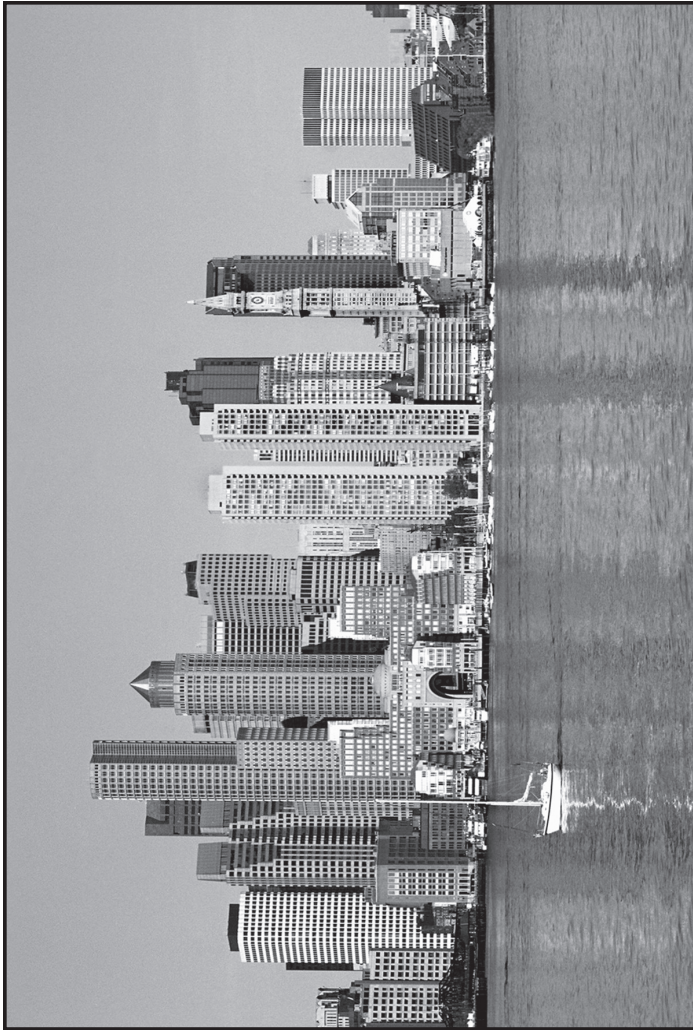




ASPENEWS

1973 - THE BOSTON CHAPTER - 2011
A.S.P.E. - P.O. Box 111, East Walpole, MA 02032 - Vol. 38, Issue 9



Next Meeting

Tuesday, May 10, 2011

The Lantana, Randolph, MA

MAIN PROGRAM

“Manny’s Memos”

Presented By:

*Mr. Manny Garcia &
Mr. Rick Neth*

PROGRAM SCHEDULE

Social Hour	5:00 – 6:00
Dinner	6:00 – 7:00
Chapter Business	6:45 – 7:00
Speaker / Technical Session	7:00 – 8:30

MENU

Baby Spinach Salad, French Cut Double Pork Chop & German Chocolate Cake

MEETING RESERVATIONS

\$30.00 Reservation

\$40.00 W/O Reservation

Retired & Currently Unemployed Members are Free

Please reserve by **Friday, May 6th, 2011**

Contact Cathy @ W.P. Haney,
(508) 238 – 2030

WHAT’S IN THIS ISSUE

Boston Chapter Product Show Information	1
President’s Report	3
Membership Report	3
Technical Report	4
Legislative Report	Insert
Calendar	Insert

Society email aspehq@aol.com
Society Website www.aspe.com

Boston Chapter Website www.aspebostonchapter.org

**Where Quality and Professionalism
are an every day standard!**

Chapters are not authorized to speak for the Society

Boston Chapter ASPE Product Show

November 8, 2011 at Lantana, Randolph, MA.

We had another very successful Product Show Meeting on April 4. By now our affiliate membership should have received our 20th Anniversary Product Show Announcement Letter along with the Booth Sign-up Form and we are looking forward to receiving some early commitments from our vendors. We would like to offer a personal thank you to Frank Teebagy for his early efforts in drafting up these forms. If you are an affiliate member and have not received this information please contact us or visit the Boston Chapter website for additional information. PLEASE NOTE: we have gone electronic to keep up with the changing times and for a greener environment!! Invitations and Registration forms may also be submitted electronically (checks however, need to be returned the traditional way). If there are questions regarding any of the changes we have made this year on the forms, raffles or donations, please don't hesitate to reach out and ask us.

Rich Kealty our Raffle and Prizes Chair along with Kevin Ross our advertising chair are working to revise how we do the raffles this year. Attendance and retention of the attendees, is our Number 1 Goal for this Affiliate Dedicated Anniversary Show. We hope that streamlining the check-in process, recording CEU's for time on the show floor, raffles at the actual Affiliate Booths during the show, a significant grand prize drawing and parting anniversary show gifts for all attendees will help us attain this goal.

Nancy and I also want to thank all those in attendance at April's meeting who assisted us with the selection of seminar topics and speakers, allowing us to approach our next goal – Attendee Invites and Seminar Registration Forms. Jim Polando and Kevin Lally, along with many others, are developing the seminars and attendance forms to be presented for review at this month's Product show Meeting which will be held again at Emerson-Swan on May 2 at 5:30 PM, 300 Pond Street, Randolph, MA.

At this time, we would like to call again on those in the Engineering Community to please contact Paul Taylor or Nancy Bonnetti about joining a Sub Committee of the Product Show and help us out in any way – no matter how small or large. We have strong Committee Chairpersons who need people to back them up. We have put together an outline which provides a list of our Committees, their respective chairs and co-chairs. We have also included some of the tasks that need to be done prior to our November 8 show day and at the Anniversary Show. We promise that none of these tasks will be time intensive as we continue to delegate. Please email Paul or Nancy for copies of the past meeting minutes with Committee Outline and be a part of our 20th Anniversary Product Show.

Finally, we urge you to visit our Boston Chapter Web Site, where we have added some Product Show related news, Affiliate Spotlights and Line Cards for your reference. This is a special show – it is an anniversary show – and it is dedicated to the Affiliates who have continued to be major supporters of the Boston ASPE Chapter. We are looking to add Flair to this years show and seek old photographs, slides or relative Chapter History in your possession that you could share with us to be featured at the show.

We continue this month with our ASPE Boston Chapter Affiliate Spotlights.

KIRSCHNER ASSOCIATES, INC.

8 Abbey Lane, P.O. Box 312, Middleborough, MA 02346
Phone: 800-752-1588 Fax 508-947-0850
www.kirschnerassociates.com

Bob Kirschner: bob@kirschnerassociates.com
Dave Kirschner: dave@kirschnerassociates.com
Rob Kirschner: rob@kirschnerassociates.com

Kirschner Associates was begun on July 1, 1984 and was incorporated in the Commonwealth of Massachusetts on January 14, 1986. The company began as the result of the Patterson-Kelley Company closing its Regional New England Sales Office. Prior to that Mr. Robert F. Kirschner, owner of Kirschner Associates was the Regional Sales Manager for the Patterson-Kelley Company and had been employed by them since January 7, 1957.

Occupying the former Patterson-Kelley offices in Middleboro since 1986, business growth resulted in Kirschner Associates building an office and warehouse and relocated there in January 2000. Presently they warehouse some boilers, boiler parts and chimney materials for all types of fuels.

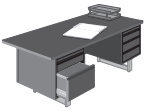
Having a strong background in heat transfer, heat exchangers, water heaters and boilers Kirschner Associates, Inc. now represents: 1. Patterson-Kelley Company, manufacturer of boilers and water heaters, 2. Rite Manufacturing and Engineering, a manufacturer of steel boilers, 3. National Combustion Company, a manufacturer of gas-fired water heaters and boilers, 4. Shaw-Perkins, a manufacturer of heavy-duty radiation, 5. Ameridex, a manufacturer of plate heat exchangers, and 6. Security Chimneys, a manufacturer of all types of chimney and vent material for boilers and other fired equipment.

Robert F. Kirschner, President, and Margaret J. Kirschner, holds ownership of all stock of the corporation. A Board of Directors consists of the stockowners and David P. Kirschner, Vice President, Robert F. Kirschner, Jr., Assistant Treasurer, and Alan R. Kirschner who is a registered professional engineer with another company.

Mr. Robert F. Kirschner is a mechanical engineer with extensive experience in the design and sales of heat transfer equipment of all types. He holds several U.S. Patents on water heaters and heat exchangers that were manufactured by Patterson-Kelley. He was Manager of Technical Services of the Patterson-Kelley Company and Regional Manager of branch offices in East Stroudsburg, PA, Chicago, IL and Boston, MA. Prior to employment with Patterson-Kelley, Mr. Kirschner was with the Whitlock Manufacturing Co., Inc. in Elmwood, CT as a design and sales engineer of shell and tube heat exchangers for the pulp and paper industry, power plant and nuclear power industry.

Mr. Robert Kirschner has been a member of ASPE since 1983 and Robert Kirschner, Jr. and David Kirschner have been members since 1992. Kirschner Associates, Inc. has participated in all thirteen (13) Boston ASPE Product shows since 1985.

(Continued on page 9)



President's Report

Ladies and Gentlemen

This article is going to be as they say short and sweet. I would like to thank all the members of the Boston Chapter for entrusting me with the presidency for the last 4 years. I would also like to thank all the members both past and present of the Boston Chapter board of directors for your help and support. The chapter should be eternally grateful I know I am. It has been a long 4 years but it has been I hope fruitful. I will continue to support the chapter anyway I can and in any capacity the board sees fit to ask me to perform. And as the saying goes Elvis has left the building.

By Frederick Neth, CPD, President, Boston Chapter ASPE



Membership News

New Boston Chapter Members

This month we are happy to welcome the following new members into our chapter:

Brian Bourque	Affiliate	
Sean Roberts	Affiliate	Symmons Industries
Richard Kealty	Affiliate	American Standard

Interesting Plumbing Installation

Who among us hasn't at some point in time received an email from a friend that included photos showing the improper installation of plumbing fixtures, electrical equipment or ladders and scaffolds? I always wondered if the photos were legitimate or simply an exaggerated installation. I also wondered where in the world these photos came from. As luck would have it, I recently discovered an interesting installation for a "handicapped accessible" lavatory in a local highway Rest Area which will remain anonymous; I'm not trying to get anyone in hot water. Take a look at the photo below.



It appears the wall hung lavatory became loose from years of public use. Instead of fixing or replacing the concealed arm carrier in the wall, the solution was simple. Someone cut two wooden poles to length and wedged one end in the arm carrier holes on the underside of the lav. The other end fit snugly in the corner where the floor and wall meet. Problem solved.

To give credit where credit is due, the installer provided a nice finishing touch that you

(Continued on page 6)

President

Fredrick S. Neth, EIT
Parsons Brinckerhoff
Tel: (617) - 960 - 4809
e-mail: nethf@pbworld.com

V. P. Technical

Rich Dean, CPD
R. G. Vanderweil
Tel: (617) - 956 - 4743
Fax: (617) - 423 - 7401
e-mail: RDean@Vanderweil.com

V. P. Legislative

Manuel B. Garcia, PE, CPD
Tel: (508) - 728 - 5652
Fax: (774) - 202 - 7677
e-mail: mgarcia43@comcast.net

Deputy V.P Legislative

Laurence D. Johnston, CPD
Syska Hennessy Group, Inc
Tel: (617) - 682 - 4758
Fax: (617) - 577 - 9191
e-mail: ljohnston@syska.com

V. P. Membership

John Callahan
J. H. Pokorny Associates
Tel: (781) - 762 - 2661
Fax: (781) - 762 - 5949
e-mail: johnc@jhpokorny.net

Treasurer

Richard Pokorny
J. H. Pokorny Associates
Tel: (781) - 762 - 2661
Fax: (781) - 762 - 5949
e-mail: richp@jhpokorny.net

Administrative Secretary

Paul Galvin
GF Piping Systems
Tel: (741) - 788 - 7042
Fax: (508) - 362 - 3544
e-mail: paul.galvin@georgfischer.com

Corresponding Secretary

Patrick J. Haney
W. P. Haney Company
Tel: (508) - 238 - 2030
Fax: (508) - 238 - 8353
e-mail: phaney656@aol.com

ASPENEWS Editor

Dawn Pokorny
Tel: (508) - 520 - 0133
Fax: (781) - 762 - 5949
e-mail: dawnp@jhpokorny.net

Education Chairman

Blair Chamberlain, PE, CPD
WSP Flack + Kurtz
Tel: (617) - 210 - 1631
Fax: (617) - 210 - 1800
e-mail: Blair.Chamberlain@wspfk.com

Affiliate Liaison

Jeff Gooding
Tel: (401) - 639 - 4429
Fax: (508) - 894 - 2001
email: jgooding@goodingd.com

Board of Governors

Chairman - Al Marzullo PE, CPD

Members

Joseph A. Vela, Sr., CPD
William F. Hughes, CPD



Technical Report

April Meeting Wrap-up

This past month we welcomed Mr. Joe Scott, FASPE, CPD, and LEED AP to our chapter's monthly meeting. A frequent contributor to Plumbing System & Design magazine he is also a Past President of ASPE and an Associate at Cannon Design in St. Louis. Joe has had long relationship with the Boston Chapter and has always supported us on many issues. Last year we approached Joe and he was nothing but enthusiastic about speaking in front of our group.

Joe's presentation looked at many issues that are potential disasters in the making. This was all based on his experiences throughout his long career. He had many slides from various projects and some interesting images he gathered from the internet. Quite a few of these slides presented had issues that could have catastrophic impact on personal safety and public health.

He went through various installations of roof drains and secondary drains. He showed images of a series of thermostatic mixing valves that had been bypassed to allow better flow. Other installations of good and bad piping were discussed at length. Wrapping up the presentation was a plethora of images of T&P relief valves that had either been improperly piped or disarmed. After looking at these poor installations Joe sobered the group with images of severely damaged buildings caused by small water heaters that had exploded. He then followed with a video presentation of a controlled test of a 10 gallon water heater exploding. The emphasis of this video was to show how much danger there is with plumbing system. Speaking in front of a group of plumbers and designers Joe was able to put a humorous twist to keep the presentation lively. Despite the humor he did not fail to stress the consequences of improper design and installation. As design professionals we need to be keenly aware of the potential issues and importance of proper design and installation.

May Special Technical Topic & Meeting

The May presentation is going to focus on a few design issues that are very particular to Massachusetts. The basis of the topics are the "Manny's Memos". We are going to present short discussions on designing and Permitting of Rain-water Harvest system, and other topics such as Secondary Roof drains.

I look forward to seeing you at the next meeting.

By Rich Dean, CPD, V.P. Technical, Boston Chapter ASPE

DiGiorgio Associates Inc. (DAI) is a Boston based Architectural and Engineering firm with a branch office located in Farmingdale, ME. DAI was established in 1984. In 1988, DAI opened a construction subsidiary, Monitor Builders Inc.(MBI). In 2002, DAI added an engineering division to be able to offer clients a full range of quality design, engineering and construction services. At DAI, the primary focus is on providing quality services to our clients, while providing leadership and growth opportunities to our staff. Although DAI's client base is diverse, we specialize in the planning, architecture, engineering and construction of acute care hospital facilities as well as other medical project types.

We are currently accepting applications for the following position:

Mechanical Engineer – Position requires extensive experience in the design of mechanical systems for acute care hospitals, health care facilities and other related projects. The ideal candidate must have advanced experience in the design of HVAC, plumbing, medical gas and/or fire protection systems for healthcare facilities and the ability to manage all aspects of a project from preliminary design concepts through construction administration. In depth knowledge of FGI Guidelines is required. A working knowledge of Elite load estimating programs, Trane Trace 700 and MasterSpec is desirable. Ideal candidate must possess the ability to perform detailed field surveys of existing mechanical systems. Fifteen years plus experience and professional registration in the New England states is preferred. ASHRAE HFD certification is a plus. Ability to attain Professional registration in New York and Rhode Island as well as travel throughout New England will be required.

Competitive salary and excellent benefits package

Interested candidates should forward their qualifications to:

Human Resources
DiGiorgio Associates Inc.
225 Friend Street
Boston, MA 02114

Phone: (207) 582-2400
Email: jobs@dai-boston.com

www.dai-boston.com

The Maine office is located at 484 Maine Avenue in Farmingdale.

SLOAN VALVE CO. • HALSEY W. TAYLOR CO. • LEONARD VALVE CO.
WATER SAVER • GUARDIAN • GEORGE FISCHER
JUST • ACORN • CHRONOMITE

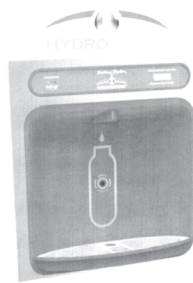
J.H. POKORNY ASSOCIATES

1502 PROVIDENCE HIGHWAY
NORWOOD, MA 02062
www.jhpokorny.net

TEL (781) 762-2661
FAX (781) 762-5949
info@jhpokorny.net

Bottle Filling Station

- **Visual Filter Monitor**
Green, yellow, red LED lights indicate when filter needs maintenance
- **Water Dispenser**
Quick fill rate - 1.1-1.5 gpm
Laminar flow provides a clean fill with minimal splash
- **Green Counter™**
Informs user of number of 16oz. bottles saved from landfills



Halsey Taylor
Satisfying Thirsts Since 1912

halseytaylor.com

630.574.3500

K Ross Co.
Manufacturers Agent

WWW.KROSSCO.COM
SALES@KROSSCO.COM
(781) 422.2273



ETTER Engineering Company, Inc.

SOLUTIONS. . .

To ALL Your Process Heating & Combustion Needs!

Custom Manufacturing Solutions

- Complete regulator station design and build
- Custom process heating packages and applications
- Engineering specialty valve packages and valve trains
- Energy and metering services, including in-plant sub-metering, complete station design and build, and data acquisition
- UL-508A Certified Panel Shop specializing in combustion controls and flame safeguard systems.



www.etterengineering.com

Robert Lyman - Sales Engineer

Gas Booster Systems Include:

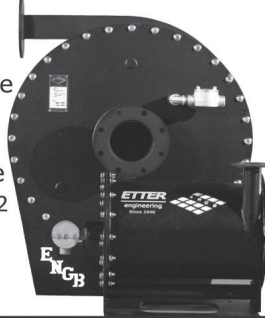
- Volumes in excess of 120,000 ICFH
- Static gains in excess of 41" WC
- Complete packaged systems available eliminating your TECHNICAL RISK!
- Simplex or duplex systems
- Indoor and outdoor installations
- Various control philosophies available



Toll Free: 800-444-1962
Tel: 860-584-8842
Cell: 203-980-1251

**210 Century Drive
Bristol, CT 06010**

rlyman@etterengineering.com



It takes guts to take 'em all on.



**Can you recognize one of
the "Red Sox" players
from this 1975
Symmons Advertisement?**

In a few short days you can:

- Mingle with plumbing engineers from across the country
- Identify what design methods you need to increase your skill set
- Discover innovative ideas to take back to the office
- Find out what industry segments will be hot in the next year
- Pick the brains of experts working in the field
- Grow your knowledge...and your career

NEW This Year! Networking Roundtable Discussions

Partake in a lively conversation on the latest plumbing engineering issues with your peers from across the country.

**2011 ASPE
TECHNICAL
SYMPOSIUM**

OCT. 27-30, 2011
ORLANDO, FLORIDA



Network to Succeed.



(Continued from "Membership Report" on page 3)

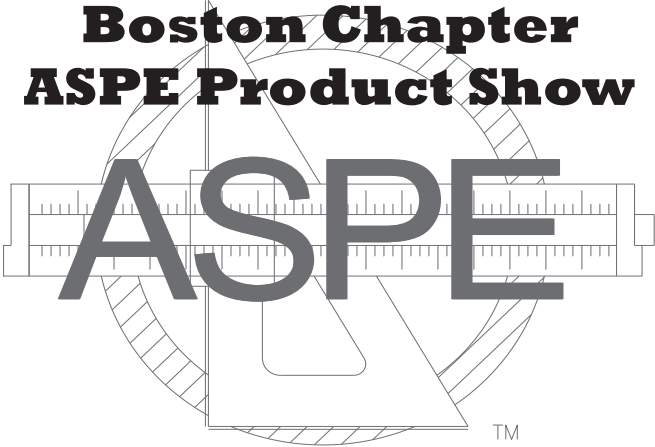
can't really see in the photo. He added non-skid rubber caps on the bottom of the poles to help keep them in place. Nice touch. Now that I take another look at the photo, it appears the lavatory is installed too close to the adjacent wall to have ever conformed to handicapped accessible requirements anyway, but that's not really the point now is it? In your travels, should you find a plumbing installation gone awry, take a photo and send it to me for the newsletter. I'll keep all submissions anonymous if you so desire.

And the Winner Is...

If you've been reading your newsletter, you are well aware of the fact that we have been having a membership drive that will have ended on April 30th. All *new chapter members* as well as the *sponsors* of new members will be entered into a drawing for a \$250 Best Buy gift card. The drawing will take place during the May Chapter meeting. You must be present to win, (unless you are a Member-At-Large that just changed your Chapter Affiliation to the Boston Chapter. We're not going to require you to drive in from MD, VA or PA.) Good luck to all our new members and their respective sponsors.

By John Callahan, CPD, V.P. Membership,
Boston Chapter ASPE

**Boston Chapter
ASPE Product Show**



The Boston Chapter Board of Directors is
pleased to announce our
20th Anniversary Product Show

to be held on
**November 8, 2011 at Lantana,
Randolph, MA.**

**FREE DINNER
AT NEXT
ASPE MEETING**

Be one of the first two people
to email the
answers to the following questions to:
richp@jhpokorny.net

And get a FREE DINNER at the
May Meeting

1. Who is the "Red Sox" Player
on page 5?
2. What was used to brace the Lavatory?

TMP Consulting
Engineers

Plumbing / Fire Protection Designer/Engineer

TMP is located at Downtown Crossing on the Red, Orange, and Green Line. We offer a full benefits package and flexible time.

- Seven + years experience in plumbing/fire protection design/engineering for buildings and tenant work in buildings, including institutional schools and commercial projects.
- Strong communications and interpersonal skills.
- Familiarity with local plumbing code and relevant NFPA chapters.
- Capable of preparing construction drawings for Plumbing/Fire Protection systems using MEP AutoCAD and Revit.
- Capable of field surveying for projects to be designed.
- Plumbing CIPE or CPD a plus.

Send resumes to:
email: jlevasseur@tmpeng.com
www.tmpeng.com

↑ PRACTICAL APPLICATIONS →

pH Neutralization

Greywater • Bio Decontamination

Amalgam / Mercury Treatment

www.paiH2O.com 617-423-5639

GOURLEYCO
HOT WATER BY DESIGN
80 FELTON STREET, WALTHAM, MA 02453
Phone: 781-894-9500 Fax: 781-894-2301
Website: www.gourleyco.com

Raypak Gas Water Heating Boilers Hydronic Heating Boilers Gas Fired Booster Heaters Commercial Pool and Spa Heaters	Rheem Tank-type Water Heaters Gas and Electric Residential and Commercial	RUUD
RECO Semi-Instantaneous & Factory Packaged Water Heaters	EVO Ultra High Efficiency Stainless Steel Boilers	

ELKAY EZH₂O™
Quick, Clean & Green

For more than 90 years Elkay has been an innovator in manufacturing stainless steel sinks and coolers. Now we are excited to introduce the new EZH₂O™ bottle filling station.

Ideal for education, healthcare facilities, fitness clubs, and hospitality

ES Emerson Swan
(800) 346-9215



Retro Fit To Any "EZ" Cooler

The High Efficiency Revolution is here in Domestic Hot Water Production from A. O. Smith

AOSmith
www.hotwater.com

ES Emerson Swan 800.346.9215

The Walter F. MORRIS Company
Serving you since '22"

77 Green St. Foxboro, MA
Ph: 1-800-888-1922
Fax: 1-800-888-1942
www.walterfmorris.com

BOCK WATER HEATERS • BOSCHPRO TANKLESS

COMFORTPRO . FLOODMASTER

3M / AQUA-PURE • IPEX • LUXPRO

N Y THERMAL . WOODFORD/ WATCO

LEONARD
WATER TEMPERATURE CONTROLS

Leonard Valve Company
1360 Elmwood Avenue
Cranston, RI 02910
Ph (800) 222-1208
Fax (401) 941-5310
www.leonardvalve.com



JHP

J.H. Pokorny Associates

JH Pokorny Associates
1502 Providence Hwy
Norwood, MA 02062
Ph (781) 762-2661
Fax (781) 762-5949
www.jhpokorny.net



Leonard... "The Right Mix" for tempering your domestic hot water system.



CDM, a full-service consulting, engineering and construction firm, is seeking a **Senior Plumbing Engineer**. You will be completing the design of building mechanical systems, including Plumbing and Fire Protection, for technically challenging facility design projects. Responsibilities include:

- Design and manage the design of complex plumbing and fire protection systems.
- Work with clients and project managers to solve their plumbing design challenges.
- Be the CDM expert in advanced fire protection techniques.
- Prepare plans and specifications for bidding and construction.
- Coordinate projects with the electrical, structural, process, instrumentation and architectural disciplines.
- Prepare water conservation and cross connection studies.
- Select fire protection systems for water sensitive spaces such as computer and electrical equipment rooms.

Job Requirements

- B.S. Mechanical Engineering; minimum 7 years experience and PE required.
- Experience designing plumbing/fire protection systems for water/wastewater, semiconductor, biopharmaceutical and/or other technically complex industrial projects.
- Familiar with NFPA Standards and Building Codes
- Excellent communication skills; MS Office; AutoCAD; ASPE certification and LEED credential desired.

Follow the link below to apply:

https://jobs.brassring.com/1033/ASP/TG/cim_jobdetail.asp?partnerid=25038&siteid=5220&AReq=10146BR&Codes=ASPE

We are an equal opportunity employer.

BLW Engineers, Inc.

mechanical electrical plumbing fire protection

PLUMBING / FIRE PROTECTION ENGINEER

BLW Engineers, Inc., Mechanical and Electrical Consulting Engineers, is seeking a Plumbing/Fire Protection Engineer with a minimum of 3-5 years experience in Plumbing and Fire Protection systems design to support project work for our clients. Ideal Candidate must demonstrate strong technical/verbal skills and be self-motivated. Proficiency in AutoCAD and Revit preferred. The position is for our Littleton, MA office. We offer an excellent salary and benefit package with room for advancement.

If interested please send resumes to:

info@blwengineers.com

The Californians are coming!

California's low-lead legislation is spreading across the country, and T&S has already made all of our products low-lead across the line. And as always, T&S products are rugged, reliable, and available via 24-hour quick ship.



contributing
to LEED
certification

RELIABILITY BUILT IN™
www.tsbrass.com • 800.476.4103

Represented in Boston by Specification Sales - 781-396-0842



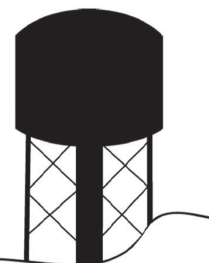
603-644-5554

Fax: 644-3338

800-542-5554

sales@towerhillsales.com

www.towerhillsales.com



P.O. Box 457
320 Rockingham Road, Unit 4
Auburn, New Hampshire 03032

Tower Hill
Sales Associates, Inc.



Guardian

EMERGENCY EYEWASH & SHOWER TECHNOLOGY

J.H. Pokorny Associates

1502 Providence Highway
Norwood, MA 02062

781 762 2661 TELEPHONE

781 762 5949 FACSIMILE

Guardian Equipment

1140 N North Branch St
Chicago, IL 60642

312 447 8100 TELEPHONE

312 447 8101 FACSIMILE

KIRSCHNER ASSOCIATES, INC.

8 Abbey Lane, PO Box 312

Middleboro, MA 02346-0312

Tel: 800-752-1588 Fax: 508-947-0850

www.kirschnerassociates.com

PATTERSON-KELLEY

AMERIDEX PHX • WENDLAND TANK

RITE BOILERS • NATCO HEATERS

SECURITY CHIMNEYS

The Fire Pump Testing Company

Evaluation, Testing and Certification of Fire Suppression Systems
Fire Pump Testing, Standpipe Testing and Building Commissioning
Hydrant Flow Testing and Water Supply Analysis
Residential and Commercial System Installation and Service
Fire Protection Design and Engineering - System Hydraulic Analysis

Tel: (617) 971-0700

Fax: (617) 524-7171

Cell: (617) 592-4236

11 Varney Street

Boston, MA 02130-4109

Thomas Duross CPD

<http://www.thefirepumptestingcompany.com>

Email: tom@thefirepumptestingcompany.com

Member: ASPE, NFPA, AFSA, FCCCHR, BBB



Spencer

The Spencer Turbine Company

Manufacturer's of:

- UL-Listed Hermetic Natural Gas Boosters
- Central Vacuum Systems for Housekeeping, Oral, and Surgical Laser Smoke Evacuation

Represented by: **Environmental Air Specialties**

P.O. Box 541 – Grafton, MA 01519

p: 508-839-6157 – f: 508-839-4431

www.easne.com

Maurice Brodeur – Sales/Engineering

Cell: 508-958-6346 – mbrodeur@easne.com



**80 FELTON STREET,
WALTHAM, MA 02453
PHONE: 781-894-9500
FAX: 781-894-2301**

The Gourley Company was incorporated as R. L. Gourley Company in 1953. Its founder, Bob Gourley, was the Ruud District Sales Manager in New England when Ruud decided to close its district offices and market its water heaters through what came to be known as Ruud Basic Distributors. As with many other Ruud District Sales managers, Gourley became the Ruud Basic Distributor for New England.

As the business grew it moved from Newton to Wellesley and finally in 1987 to Waltham - just outside of Boston.

During its early years, Mr. Gourley worked with gas utility companies to develop water heater rental programs for people living in “cold water flats” (multi-family dwellings without hot water service). For \$1.95 per month, people who had been heating water on their kitchen stove, received a Ruud water heater and had one hot water tap installed.

“Bob Gourley was the consummate water heater salesman,” said Bob Shupe, who bought the company in 1975. “His name was synonymous with water heating so I didn’t even think of changing the company name!”

In the last half of the seventies, Shupe reshaped Gourley’s operations, by adding other commercial products and focusing on plumbing engineers and the commercial market. A substantial number of stocking wholesalers have also come aboard through the 70’s and beyond.

Gourley Company is a UL authorized conversion site for changing electrical characteristics on commercial electric heaters. The company also converts natural gas to LP heaters and maintains a service and repair facility.

Over the years we have acquired other equipment lines, mostly HVAC products, but our focus does not wander much from domestic hot water, i.e. not only gas fired Ruud & Raypak but RECO ASME Code indirect factory packaged water heaters, storage tanks & steam generators, Hamilton high efficiency water heaters & boilers and on the HVAC side, Roberts Gordon low intensity Infra-red heating systems & Suburban gas fired PTAC units.

“The Key to Gourley’s success in the water heater business has been our people,” Bob Shupe pointed out. “Our average employee has 15 years with our company and we are very grateful for the strong support we have received from our employees, our customers, and certainly the engineering community.

All Product Show comments, suggestions and support are welcome at any time to:

Paul Taylor (ptaylor@ber-engineering.com)

Nancy Bonnetti (nbonnetti@quanteng.com)

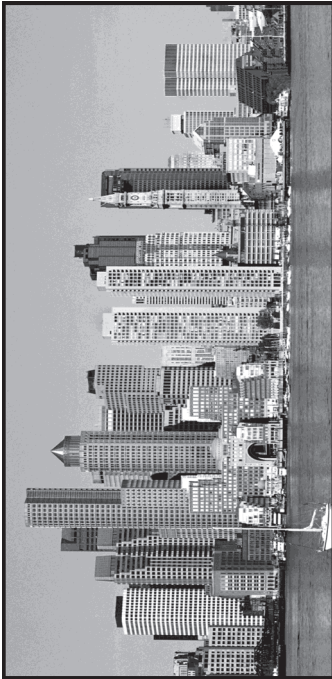
Index of Paid Advertisers

AO Smith	7	Halsey Taylor	4	Victautic	10
Copper Development Association	10	J. H. Pokorny Associates	4	Walter F. Morris Company	7
Elkay	7	K Ross Co.	4	W.P. Haney / Watts	10
Environmental Air Specialties	8	Kirschner Associates, Inc.	8		
ETTER Engineering	5	Leonard Valve	7		
ETTER Engineering	5	Practical Applications	7		
Fire Pump Testing Company	8	Sloan Valve Company	10		
Gourley	7	T & S Brass	8		
Guardian Equipment	8	Tower Hill Sales Associates, Inc.	8		



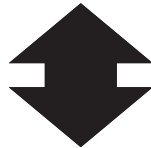
From:

**A.S.P.E.
P.O. Box 111
East Walpole, MA 02032**



Boston Chapter - AMERICAN SOCIETY OF PLUMBING ENGINEERS

**Next
Event**



**Tuesday
10th
May**

Send to:

[Empty rounded rectangular box for recipient address]

FIRST CLASS MAIL

SLOAN.
SLOAN VALVE COMPANY

Represented to ASPE by:

J.H. Pokorny Associates
phone: 781-762-2661

web: www.jhpokorny.net • e-mail: info@jhpokorny.net

Technical assistance | training | promotional materials

Working with copper? Have a question?

Dale L. Powell

Project Manager & Piping Applications Specialist

Tel: 717.533.0353 / 212.251.7202

Fax: 866.462.1751

E-mail: dpowell@cda.copper.org

Do it Proper. Do it Copper.®



www.copper.org

**WATTS®
REGULATOR**

**WATTS
DRAINAGE**

**AMES
FIRE & WATERWORKS**

Patrick J. Haney

Represented by:
WP Haney Co.
51 Norfolk Ave.
South Easton, MA 02375
Phone (508) 238-2030
Fax (508) 238-8353
Cell (508) 326-7056

**Piping.
Systems.
Solutions.**

victaulic®

Northeast Engineering Specialist
David Dears • 617-824-0601

www.victaulic.com
1-800-PICK-VIC