

WHAT'S IN THIS ISSUE

President's Report	2
Technical Report	3
Membership Report	4
Legislative Report	6
Calendar	Insert

Society email aspe@aspe.org
 Society Website www.aspe.org

Boston Chapter Website www.aspebostonchapter.org

Next Meeting

TUESDAY, DECEMBER 10, 2013

JOINT MEETING WITH ASHRAE

**Embassy Suites,
 550 Winter St., Waltham, MA**

MAIN PROGRAM

Beyond Balancing: Total Flow Control

SPEAKER

***Mr. Paul Delube,
 Northeast Regional Director, Griswold Controls***

PROGRAM SCHEDULE

Plumbing 101 / Social Hour	5:00 – 6:00
Dinner	6:00 – 7:00
Speaker / Technical Session	7:00 – 8:00

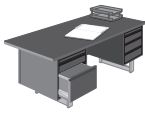
MENU

New England Chowder,
 Oven Roasted Garlic Prime Rib
 Bourbon Chocolate Bread Pudding
 w/ Vanilla Bean Sauce

MEETING RESERVATIONS

\$30.00 Reservation
\$40.00 W/O Reservation
Retired & Currently Unemployed Members are Free

RESERVE by **THURSDAY, DECEMBER 5th, 2013**
 Contact Cathy @ W.P. Haney,
 (508) 238 – 2030



President's Report

Sincerely, Kevin W. Lally, CET,, President, Boston Chapter ASPE

President
Kevin Lally, CET
Eldaar Craft Design
Tel: (603) - 505 - 4503
e-mail: kwl@eldaar-craftdesign.com

V. P. Technical
Laurence D. Johnston, CPD
Consentini Associates
Tel: (617) - 494 - 9090
e-mail: ljohnston@consentini-ma.com

V. P. Legislative
Frank Denisi
Consentini Associates
Tel: (617) - 234 - 1824
e-mail: fdenisi@cosentini-ma.com

V. P. Membership
John Callahan, CPD
J. H. Pokorny Associates
Tel: (781) - 762 - 2661
Fax: (781) - 762 - 5949
e-mail: johnc@jhpokorny.net

Treasurer
Richard Pokorny
J. H. Pokorny Associates
Tel: (781) - 762 - 2661
Fax: (781) - 762 - 5949
e-mail: richp@jhpokorny.net

Administrative Secretary
Paul G. Galvin
GF Piping Systems
Tel: (741) - 788 - 7042
Fax: (508) - 362 - 3544
e-mail: paul.galvin@georgfischer.com

Corresponding Secretary
Patrick J. Haney
W. P. Haney Company
Tel: (508) - 238 - 2030
Fax: (508) - 238 - 8353
e-mail: phaney656@aol.com

Education Chairman
Fredrick (Rick) Neth, EIT
Parsons Brinkerhoff
Tel: (617) - 426 - 7330 X4809
Email: nethf@pbworld.com

Affiliate Liaison
Jeff Gooding
David Gooding Associates
Tel: (401) - 639 - 4429
email: jgooding@goodingd.com

ASPENEWS Editor
Dawn Pokorny
Tel: (508) - 520 - 0133
Fax: (781) - 762 - 5949
e-mail: dawnp@jhpokorny.net

Board of Governors

Chairman

Rich Dean, CPD

Members

Fredrick (Rick) Neth, EIT
Al Marzullo PE, CPD

Newsletter Advertising

WE OFFER BUSINESS CARD SIZE ADVERTISEMENT

The exact size is 3½" Wide X 2" High.

The cost for the advertisement is \$650/yr.

Ads will not be pro-rated.

*For an Ad Request Form & Payment information contact
Dawn Pokorny at 508-520-0133 or dawnp@jhpokorny.net*



Technical Report

JOINT MEETING WITH ASHRAE
Tuesday December 10th 2013
Embassy Suites, 550 Winter St., Waltham, MA

Main Program

Beyond Balancing: Total Flow Control

Speaker

Paul Delube, Northeast Regional Director
Griswold Controls

Mr. Paul Delube is a representative of Griswold Controls and is responsible for engineering presentation in Canada, New England, Maryland, and Washington DC. Mr. Delube has worked with the GSA on their energy requirements for federal building. He has also worked with engineers on pressure independent valves to insure high delta T for chilled and hot water systems in commercial buildings.

Prior to Griswold Controls Mr. Paul Delube was with Invensys Building Systems from 2000 to 2005: Responsible for wholesale distribution for half of North America. Prior to that he was with Erie Controls from 1994 to 2000: as Regional Manager responsible for representative network and OEM.

The program will include:

- 1) Effects of rust inhibitors and oxygen scavengers on hydronic heating systems
 - (a) NEXT GENERATION valves
- 2) Automatic Balancing
 - (a) Application and benefits of flow control cartridges
 - (b) Manual balancing with VFD systems
 - (c) Characterized (equal percentage) ball valves
 - (d) Heating and cooling coil characteristics
 - (e) Control valve authority
 - (f) Newer Technology
 - (g) Automizer® combination control valves
- 3) Pressure Independent Control Valves

Valves that accurately maintain flow rate regardless of pressure fluctuations in the system
- 4) PIM – Pressure Independent Module
 - (a) convert existing control valve into pressure independent control.
- 5) 2½" to 18" Flow Metering Stations
 - (a) Maintain 1% accuracy with no up or down stream pipe diameter restrictions
- 6) Working pressure independent valve demonstration with VFD
 - (a) How the valves operate - ½" to 6"
 - (b) Expense and operating benefits
 - (c) System applications
 - (d) Chiller applications
 - (e) Case study

ASPE members come and join your fellow plumbing and mechanical engineering design professionals and learn about balancing valves and why a balanced system is a happy system. Balanced systems for domestic hot water as well as heating hot and chilled water makes the systems run at their peak efficiencies. With unbalanced systems your pumps are pumping without the desired results, be it circulation or heat transfer.

By Laurence D. Johnston, CPD, V.P. Technical, Boston Chapter ASPE





Bradley
Commercial Washroom Innovation
www.bradleycorp.com



Davenport Associates
A Northeast Marketing & Sales Team
for Plumbing Manufacturers

75 Parker Street
Wallingford, CT 06492
Phone: (203) 265-2389
Fax: (203) 269-5941
www.davenportassociates.com



Membership News

Paperless Membership Renewals

Because Society has decided to go paperless and send your renewal invoice to you via email we seem to have a larger number of members not renewing on time each month. In an effort to reduce those numbers, I have taken the liberty of listing the names of our chapter members whose membership expiration date has passed or is approaching this month. If you are on the list and have renewed already, thank you! If not, please renew your membership ASAP.

Membership Renewals 10/31/13

Richard R. Aaron
Leland Thomas Bramer CPD
Eduardo J Chaviano P.E.
Brian J. Hanlon
William Haridman P.E.
William Jerome Jr., G.E.
Edward C. Karcher
Stephen E. Kelly
Anup Khatra P.E.
Frederic H. Livingston P.E.
Robert William Martin
Paul Frederick Padua
Kelly Quinn
Meghan Ratnam

Membership Renewals 11/31/13

Paul J. Catanzaro CET
Nicholas Davis G.E.
Frank M. Giampietro
Ethan Grossman CPD
Bruce R. Hanson CPD
Stephen MacDonald
Dennis Maguire
Patrick McAuliffe
John Paradise G.E.
Anthony J. Petrillo CPD
Chad St. Onge CPD
Gregory J. Titterington P.E.
Bruce D. Walker
Patrick J. Walsh
Gregory B. Wozny P.E.

Membership Renewals 12/31/13

Jason McKinnon
John E. Cabral
Greg Campbell CPD
Gilbert Castera Jr., P.E.
Anthony Centrella
Daniel Cohen
Steven P. Croci
Kenneth M. Elovitz
Joseph A. Fiorino
James J. Galvin
Manuel B. Garcia P.E.
Timothy Gillis
Peter E. Gobis III
William J. Hall
Geoffrey F. Hamilton
Jeremy Harold CPD
Kenneth P. Hong
Karl Jacobson
Rajesh B. Kaul P.E.,CPD, LEED AP
Ronald J. Lemire
Richard O. Marchessault
Alfred M. Marzullo P.E.
Joseph P. McNamee
Nicholas A Morin
Melville J. Mossman P.E.
Cedric M. Mukania G.E.
Ralph Mulcahy
William Papko P.E.
Jay A. Pinard
Peter G. Radzim
John M. Rattenbury P.E.
Michael Rozenblum P.E.
John M. Sheehan
Vasyl Stefantsiv
Thomas Theroux
David R. Vashon P.E., CPD
Willard Jonathan
Cho Yiu P.E.

Returning Members 50% off Promotion

If your membership lapsed in 2012 (or any year prior to that), you are eligible to rejoin the Society at a 50% discount. Regardless of how many years it has been since your membership lapsed, all it takes to become a member again is to fill out the form available at www.aspe.org. This promotion ends in December so rejoin now.

Check your mailing label

If your membership has lapsed and you are eligible to rejoin at the discounted price (50% off) your mailing label should be printed in green with "*Rejoin @ 50% Off*" printed in red under your name. Take a look at your label...is it printed in black? That means you are a current member. If it is green and red, your membership lapsed last year (or before) and you are eligible to rejoin now at 50% off (\$95). That's a bargain. Why not take advantage of it now? We've even added the required membership application in this newsletter for you. Go ahead fill it out. What are you waiting for?

LEAD-FREE. WORRY-FREE. HASSLE-FREE.
4 YEARS EARLY.



With new national lead-free legislation taking effect in 2014, there's been a lot of talk about making the switch. Here's the truth: T&S was the first fixture, faucet and fitting manufacturer to convert its entire line to lead-free alloys back in 2010.

So when you purchase a T&S faucet today, you're already lead-free compliant. No worries. No hassle.

T&S
 www.tsbrass.com
 800.476.4103

Represented in Boston by Specification Sales - 781-396-0842

ES EMERSON SWAN



On-Demand
 HyTronic Faucet
 CHICAGO FAUCETS
 SmartPlus Circ.

300 Pond St. Randolph, MA 02368
www.emersonswan.com | (800) 346-9215

ETTER Engineering Company, Inc.


SOLUTIONS...
 To ALL Your Process Heating & Combustion Needs!

Custom Manufacturing Solutions

- Complete regulator station design and build
- Custom process heating packages and applications
- Engineering specialty valve packages and valve trains
- Energy and metering services, including in-plant sub-metering, complete station design and build, and data acquisition
- UL-508A Certified Panel Shop specializing in combustion controls and flame safeguard systems.



www.etterengineering.com



Tel: 860-584-8842
 Fax: 860-584-8612
 Cell: 203-213-6971

SOLUTIONS...To ALL Your Process Heating & Combustion Needs!

ETTER Engineering Company, Inc.

Jon G. Moore
 V.P., Engineering Sales

210 Century Drive
 Bristol, CT 06010

jmoore@etterengineering.com
 www.etterengineering.com



Robert N. Littman
 Vice President

6 Norfolk Avenue, South Easton, MA 02375
 © (508) 230-9445 Fax (508) 230-9446
 Cell (617) 921-1017 rlittman@airenergy.com




- Air Compressors
- Vacuum Pumps & Systems
- Air Treatment Products
- Sales/Service/Rentals
- Dryers • Filters
- 24-Hour Service

Web: www.airenergy.com

The Walter F. MORRIS Company
 Serving you since '22

77 Green St. Foxboro, Ma
 Ph: 1-800-888-1922
 Fax: 1-800-888-1942

IPEX KITZ  **NTI WATCO**

LUXPRO FLOODMASTER EEMAX

WOODFORD  **JOHN GUEST**

The Spencer Turbine Company
 Manufacturer's of:

- UL-Listed Hermetic Natural Gas Boosters
- Central Vacuum Systems for Housekeeping
- Oral and Surgical Laser Smoke Evacuation

Represented By: **Environmental Air Specialties**
 P.O. Box 541, Grafton, MA 01519
 T: 508.839.6157 F: 508.839.4431
 W: www.easne.com



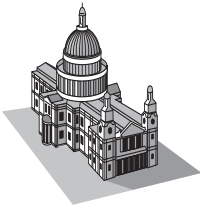
Maurice Brodeur - Sales/Engineering
 C: 508.958.6346 E: mbrodeur@easne.com

Standard UL-Listed & Custom Natural Gas Boosters & GasCube® Skid Packages Featuring:

- Standard Boost Pressures to 83" WC/ Volumes to 240,000 CFH (Higher Available)
- Simplex & Duplex Designs
- Pre-Engineered, Pre-Piped, Factory Tested
- Smallest Footprint in the Industry
- Innovative Design Cools Motor & Extends its Life



Spencer
 www.spencerturbine.com



Legislative Report

Last month's meeting was a Revit Demonstration of Plumbing and Piping Design along with a question and answer period. It was great to get in a room with my fellow Revit users and discuss some of the challenges we face in regards to Revit, we are all in the same boat! This month's article will be more the ramblings of a plumbing engineer and struggling revit user than it is an official legislative matter.

As I listen to the demonstration, I could not help but think of clients current expectations in regards to a Revit model and what exactly a set of construction documents is and what they are used for. How many times have we asked the architect a question only to receive the answer, "it is in the model, cut a section" or been asked, "Why isn't every piece of pipe in the model?" or "you model the job in Revit, why can't we build from your documents?"

Our state building code defines construction documents as "Written, graphic and pictorial documents prepared and assembled for describing the design, location and physical characteristics of the elements of a project necessary for obtaining a building permit". Construction Documents are not coordination drawings, a Revit MEP model used to generate the Construction Documents most likely does not contain the amount of coordination required to generate full blown coordination drawings. So what should we tell our clients? One of the best attempts to an answer to this question that I have heard was from a friend and previous employer who had borrowed the phrases "Design Intent Model" and "Construction Model" from the VA BIM Guide and would be very diligent explaining the differences to clients and his employers. A "design intent model" is the MEP model we as consultants generate and should not be used for construction. The "construction model" is the model the contractor maintains, updates during the construction process and utilizes to generate as-built or record drawings. Along with these definitions, my friend would describe in the contract what pipe, conduit & duct sizes would be modeled and coordinated within the "design intent model". It's not a bad an approach and I find myself preaching what my friend taught me, but is there a better approach?

It is still the Wild West out there in regards to Revit, it would be great to hear your thoughts on how to approach this matter with clients. As always, I would like to encourage all members to feel free contact me either by phone or email regarding the article or any other legislative matters.

By Frank Denisi, V.P. Legislative, Boston Chapter ASPE

The Fire Pump Testing Company

Evaluation, Testing and Certification of Fire Suppression Systems
Fire Pump Testing, Standpipe Testing and Building Commissioning
Hydrant Flow Testing and Water Supply Analysis
Residential and Commercial System Installation and Service
Fire Protection Design and Engineering - System Hydraulic Analysis

Tel: (617) 971-0700
Fax: (617) 524-7171
Cell: (617) 592-4236

11 Varney Street <http://www.thefirepumptestingcompany.com>
Boston, MA 02130-4109 Email: tom@thefirepumptestingcompany.com
Thomas Duross CPD Member: ASPE, NFPA, AFSA, FCCCHR, BBB

All Sloan Faucets are Lead-Free

Engineers know when they specify sensor faucets from Sloan, they are specifying lead-free. Sloan faucets meet all commercial lead-free needs by meeting the following codes:

- Section 116875 of the California Health & Safety Code
- NSF/ANSI 372-2011
- Vermont Lead Reduction Law (Vermont Act 193)
- Federal Lead Plumbing Law (U.S. Senate Bill No. S.3874)

Any Application. Any Environment.
www.sloanvalve.com

J.H. Pokorny Assoc.
781-762-2661



SLOAN

WATTS
REGULATOR

WATTS
DRAINAGE



Patrick J. Haney

Represented by:
WP Haney Co.
51 Norfolk Ave.
South Easton, MA 02375
Phone (508) 238-2030
Fax (508) 238-8353
Cell (508) 326-7056

Joe Myers

Regional Manager
603-223-0107 – Direct
603-223-0108 – Direct Fax
603-496-9031 – Cell Phone
jmyers@milwaukeevalve.com

Milwaukee Valve Company
16550 West Stratton Drive
New Berlin, WI 53151
262-432-2800 – Phone
262-432-2701 – Fax
www.milwaukeevalve.com



**Piping.
Systems.
Solutions.**

Northeast Engineering Specialist
David Dears • 617-824-0601

victaulic
www.victaulic.com
1-800-PICK-VIC

**ASPE NATIONAL CONVENTION
DATES & LOCATIONS!!!**

2014
September 19-24 in Chicago IL

2016
October 27-Nov 4 in Phoenix, AZ

Manufacturers' Representative

Tower Hill Sales Associates, Inc.
Servicing New England Since 1992

American Valve • Anaco/Husky • Elbi • Kingspan Solar/Rainwater
Lawler Manufacturing • PVI Industries • Proceptor • ProVent Systems
Riverside Hydronics • SIME • Speakman Company • T-Drill • Thermon
Manufacturing • TracPipe • Tyler Pipe • Willoughby Industries

800-542-5554 • sales@towerhillsales.com • www.towerhillsales.com

Guardian
EMERGENCY EYEWASH & SHOWER TECHNOLOGY

Represented by
J.H. Pokorny Associates



KIRSCHNER ASSOCIATES, INC.
8 Abbey Lane, PO Box 312
Middleboro, MA 02346-0312
Tel: 800-752-1588 Fax: 508-947-0850
www.kirschnerassociates.com

**PATTERSON-KELLEY
AMERIDEX PHX • WENDLAND TANK
RITE BOILERS • NATCO HEATERS
SECURITY CHIMNEYS**



Leonard Valve Company
1360 Elmwood Avenue
Cranston, RI 02910
Ph (800) 222-1208
Fax (401) 941-5310
www.leonardvalve.com



J.H. Pokorny Associates
JH Pokorny Associates
1502 Providence Hwy
Norwood, MA 02062
Ph (781) 762-2661
Fax (781) 762-5949
www.jhpokorny.net



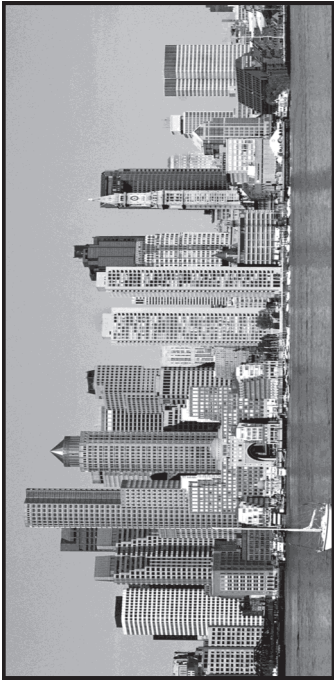
**Leonard... "The Right Mix" for your tempering
needs....including lead free mixing valves.**

Index of Paid Advertisers

Air Energy	5	Fire Pump Testing Company	6	RL Stone Co. New England	8
Bradley	3	Gourley	8	Sloan Valve Company	6
Elkay	8	Guardian Equipment	7	T & S Brass	5
Emerson Swan	5	J. H. Pokorny Associates	8	Tower Hill Sales	7
Environmental Air Specialties	5	K Ross Co.	3	Victaulic	7
Environmental Air Specialties	5	Kirschner Associates, Inc.	7	W.P. Haney / Watts	6
ETTER Engineering	5	Leonard Valve	7	Walter F. Morris	5
ETTER Engineering	5	Milwaukee Valve	6		

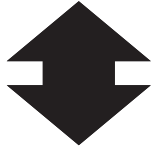
From:

**A.S.P.E.
P.O. Box 111
East Walpole, MA 02032**



Boston Chapter - AMERICAN SOCIETY OF PLUMBING ENGINEERS

**Next
Event**



**Tuesday
10th
December**

Send to:



FIRST CLASS MAIL

JHP

J. H. Pokorny Associates LLC

www.jhpokorny.net
getinfo@jhpokorny.net

1502 Providence Highway
Norwood, MA 02062
Tel (781) 762 - 2661 Fax (781) 762 - 5949

Proud to Represent:
Sloan Valve Co.
Leonard Valve Co.
WaterSaver
Guardian
Georg Fischer
Just
Oasis
Metcraft
Karp

Smart Just Got Smarter

Lead Free

RL Stone

RL Stone Company Inc.
Toll Free: (888) 404-8882
Fax: (315) 479-5402
www.rl-stone.com



Learn more at:
armstronginternational.com/brain



ELKAY

EZH₂O™

www.elkayusa.com



Davenport Associates
A Northeast Marketing & Sales Team
for Plumbing Manufacturers

Phone: (203) 265-2389
www.davenportassociates.com



GOURLEYCO

HOT WATER BY DESIGN
80 FELTON STREET, WALTHAM, MA 02453
Phone: 781-894-9500 Fax: 781-894-2301
Website: www.gourleyco.com

Raypak Gas Water Heating Boilers
Hydronic Heating Boilers
Gas Fired Booster Heaters
Commercial Pool and Spa Heaters

Rheem Tank-type Water Heaters
Gas and Electric
Residential and Commercial



RECO Semi-Instantaneous &
Factory Packaged
Water Heaters

FLOODSTOP
Stop Flood Damages Before It Really Starts!

